

Clarence Court, Horsham

Guide Price £210,000

1 1 1



A Luxury Apartment for the over 60's located in Central Horsham, boasting a Private Balcony, wonderful 24ft Living Room, Large Double Bedroom, fantastic communal facilities and No Onward Chain.

Tenure: Leasehold

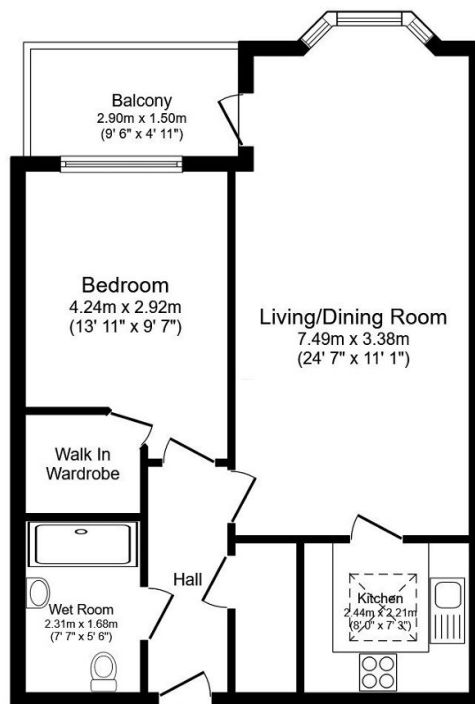
Lease Length: 125 years from January 2014

Council Tax Band: C

EPC Rating: B

Key Features

- Luxurious First Floor Apartment
- Exclusively For Over 60's
- Private Balcony
- Large Double Bedroom
- Generous 24ft Living Room
- No Onward Chain
- Lifts To All Floors
- Wonderful Communal Facilities
- Modern Wet Room
- Fantastic Central Location



Floor Plan

Total floor area 56.3 m² (606 sq.ft.) approx

This plan is for illustration purposes only and may not be representative of the property. Plan not to scale. Powered by PropertyBox